

# Master View of Fallujah



North arrows are a general orientation





Drop down from master view to match this view – then slide right (east) to match next view



match this view – then slide down (south) to match next view





match this view – then slide right (east) and match next view



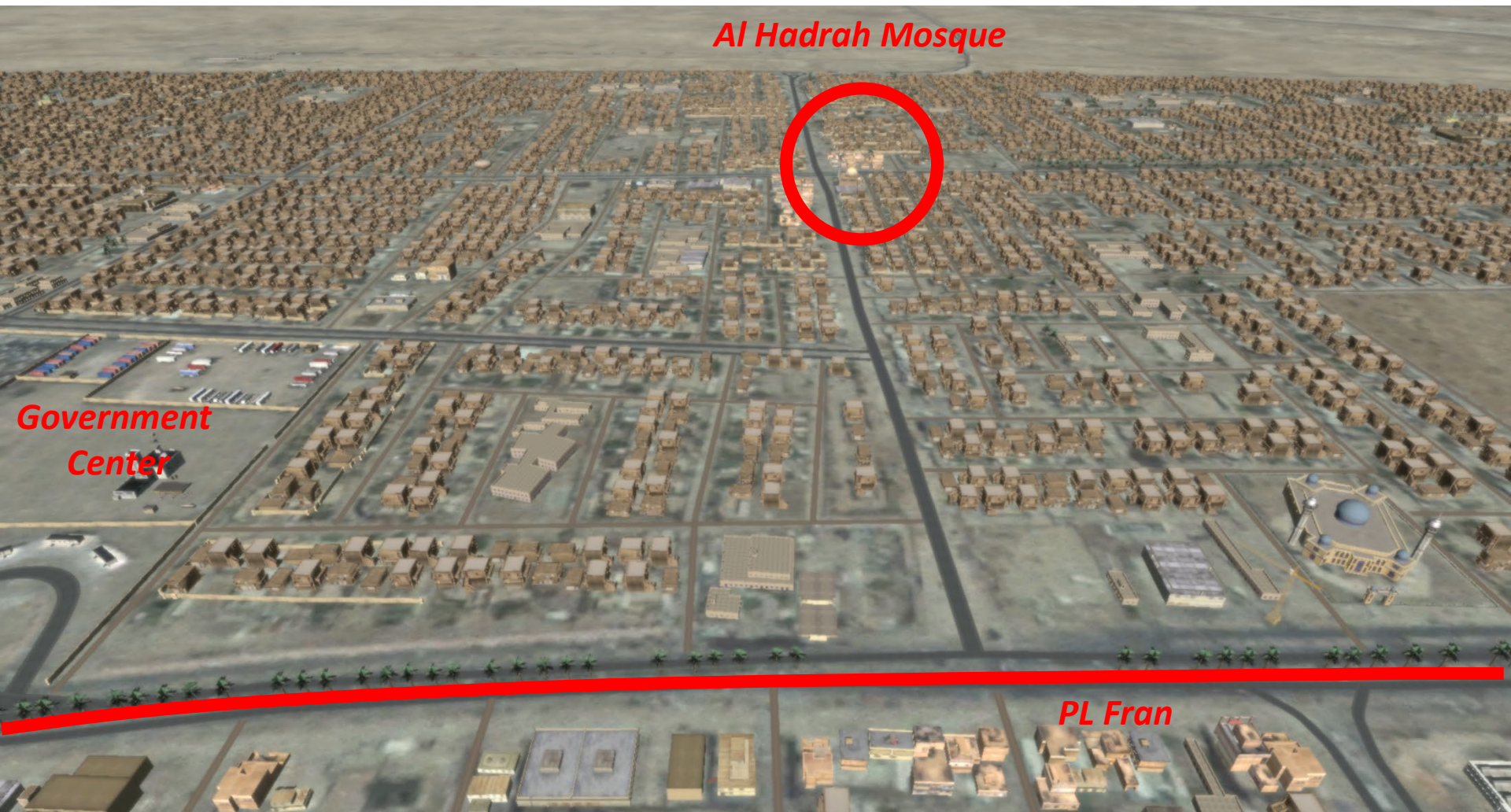
match this view – then slide right (east) and match next view





match this view – then slide right (east) and match next view

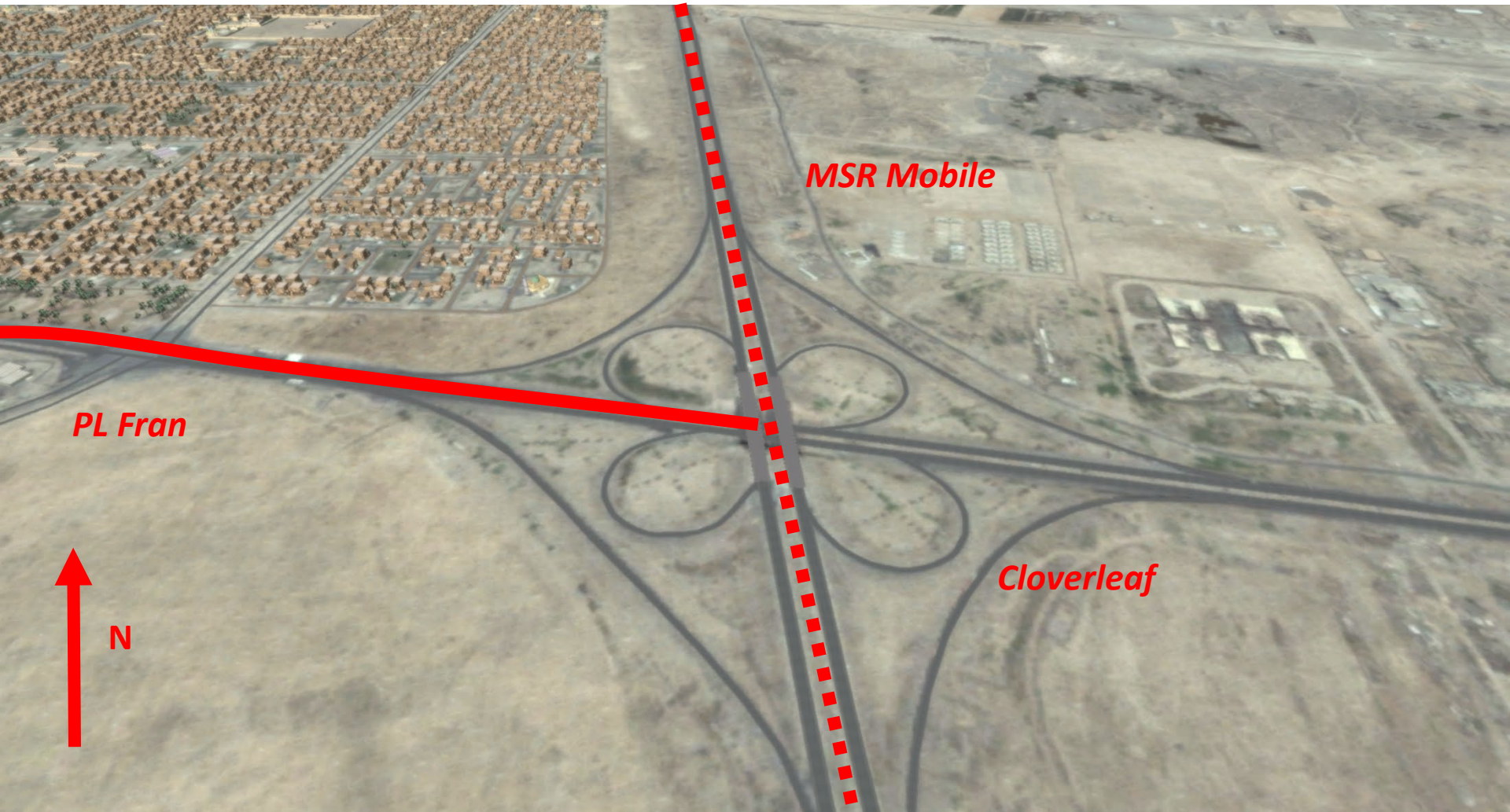




match this view – then slide right (east) and match next view



*OBJ Coyote*



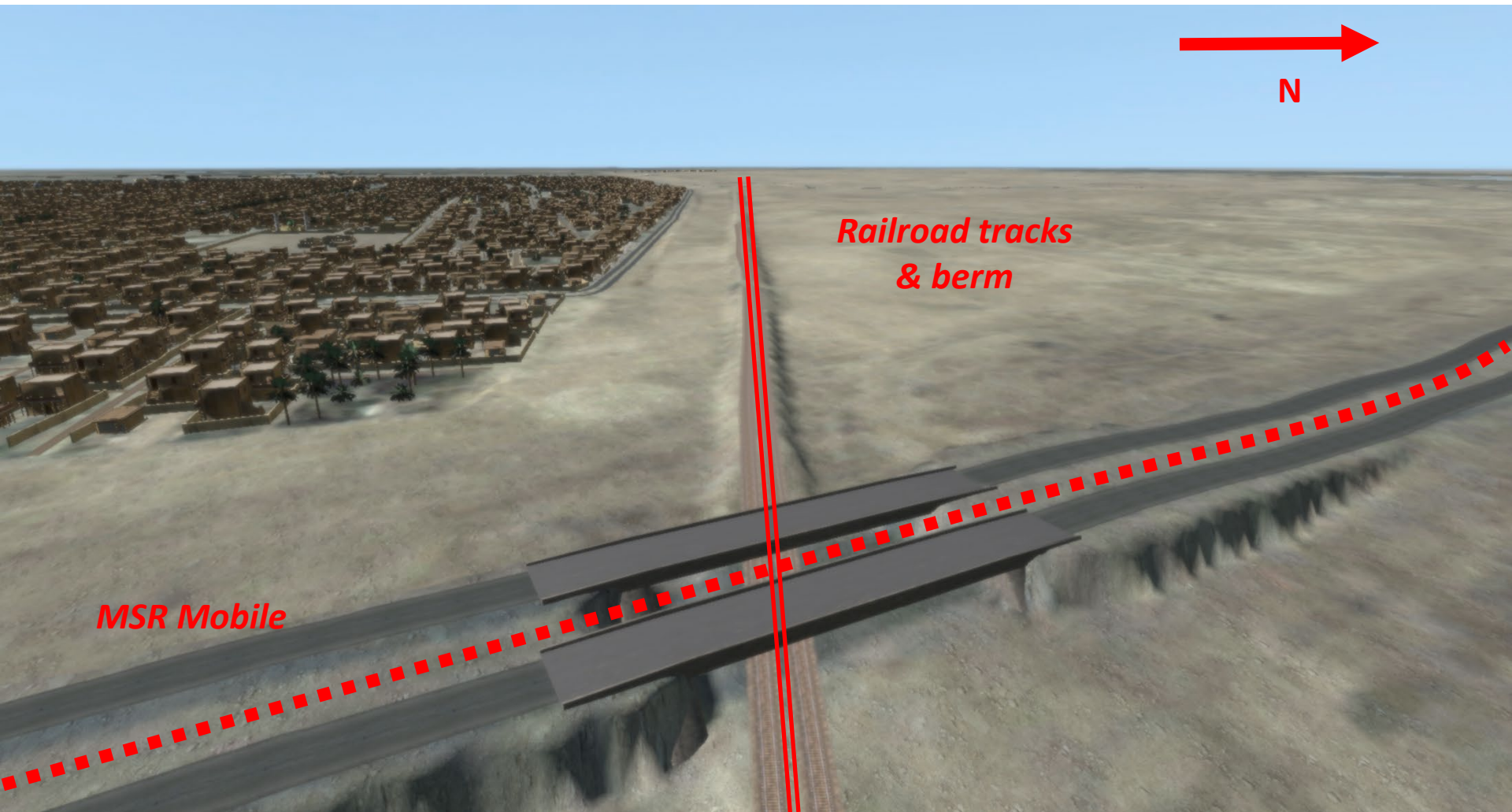
*MSR Mobile*

*PL Fran*

*Cloverleaf*

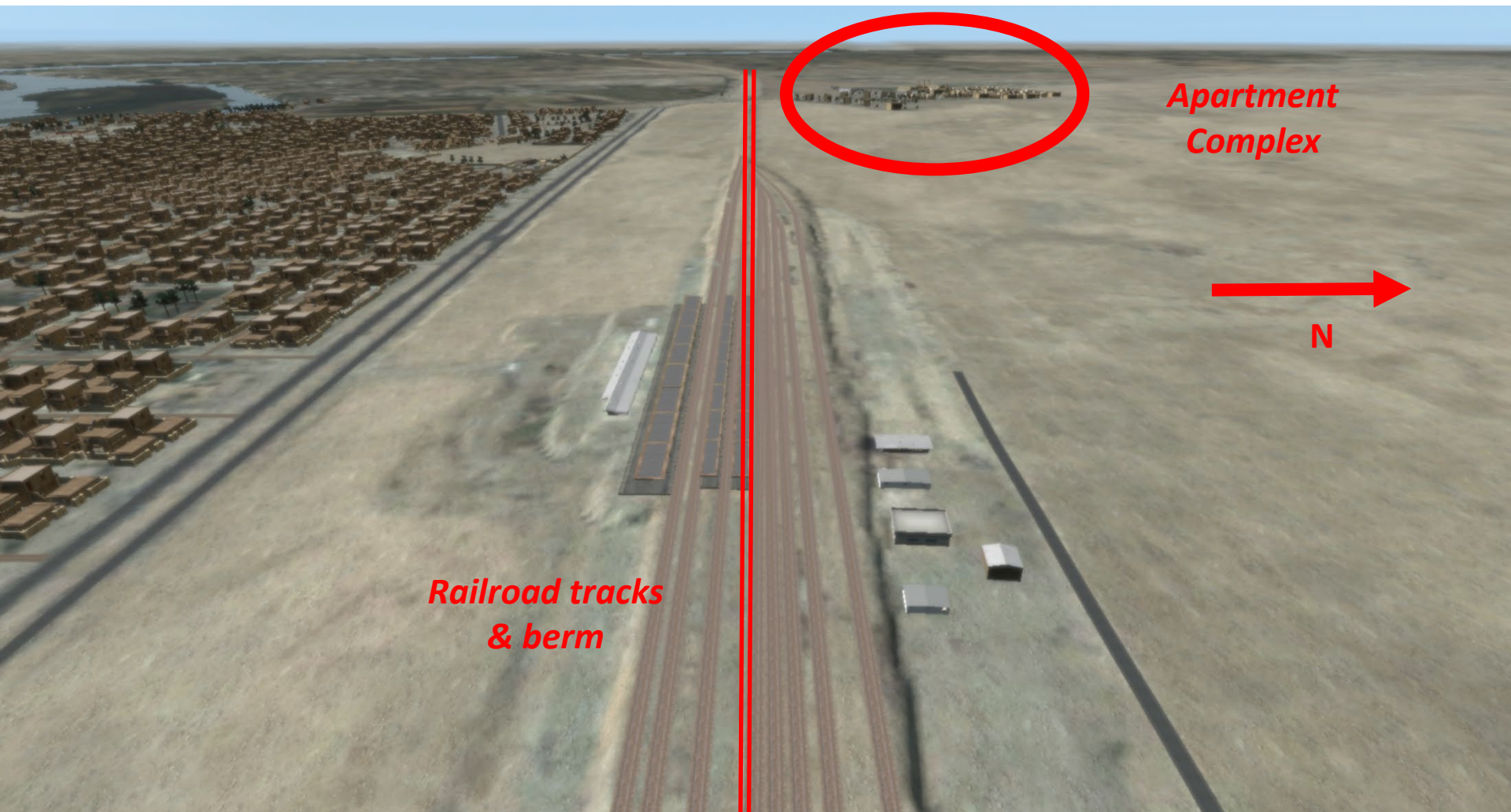
match this view – then slide up (north) along Mobile  
to the top edge of the city and pivot to face west matching the next view





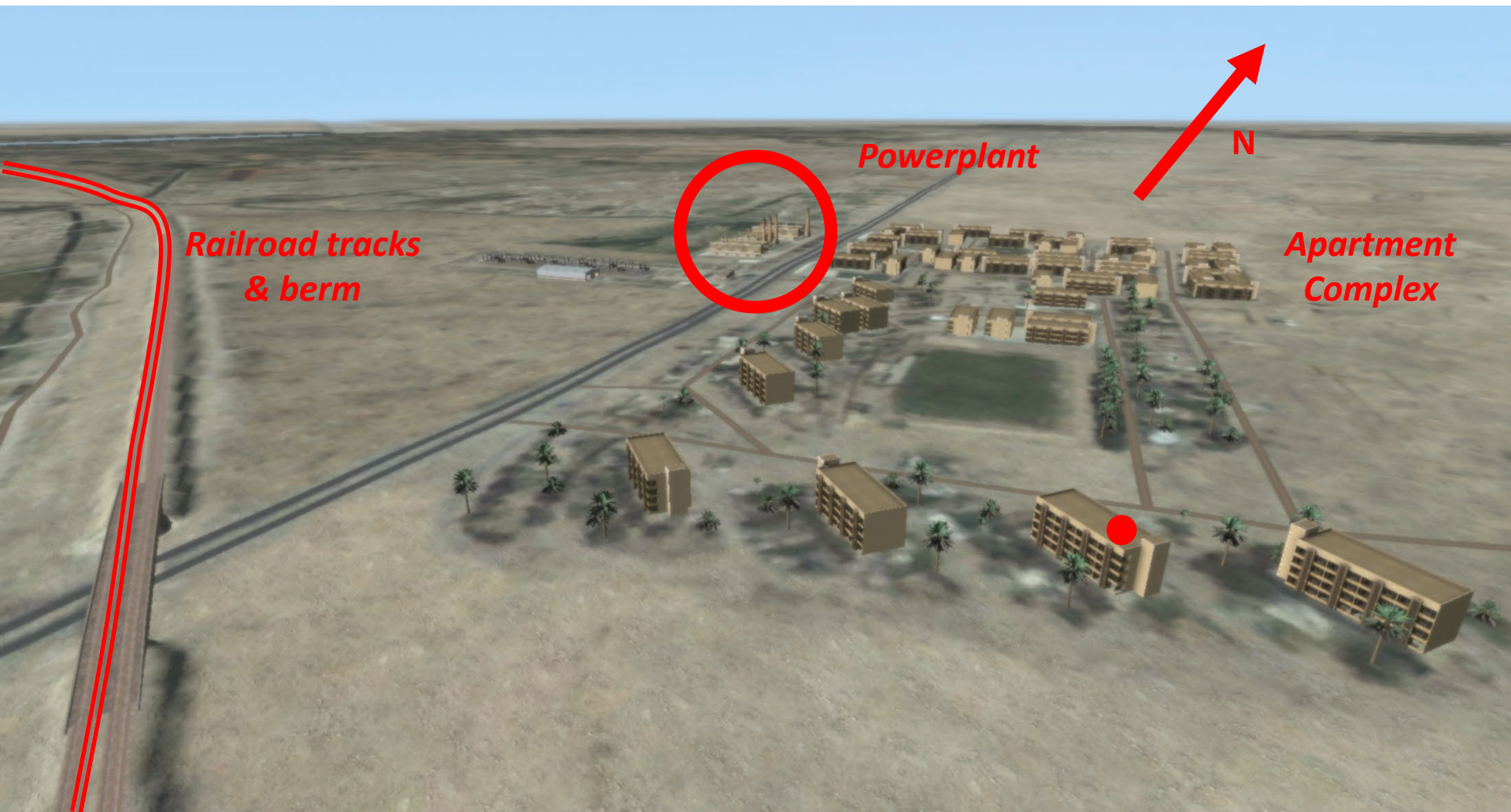
match this view – then go strait (west) and match next view





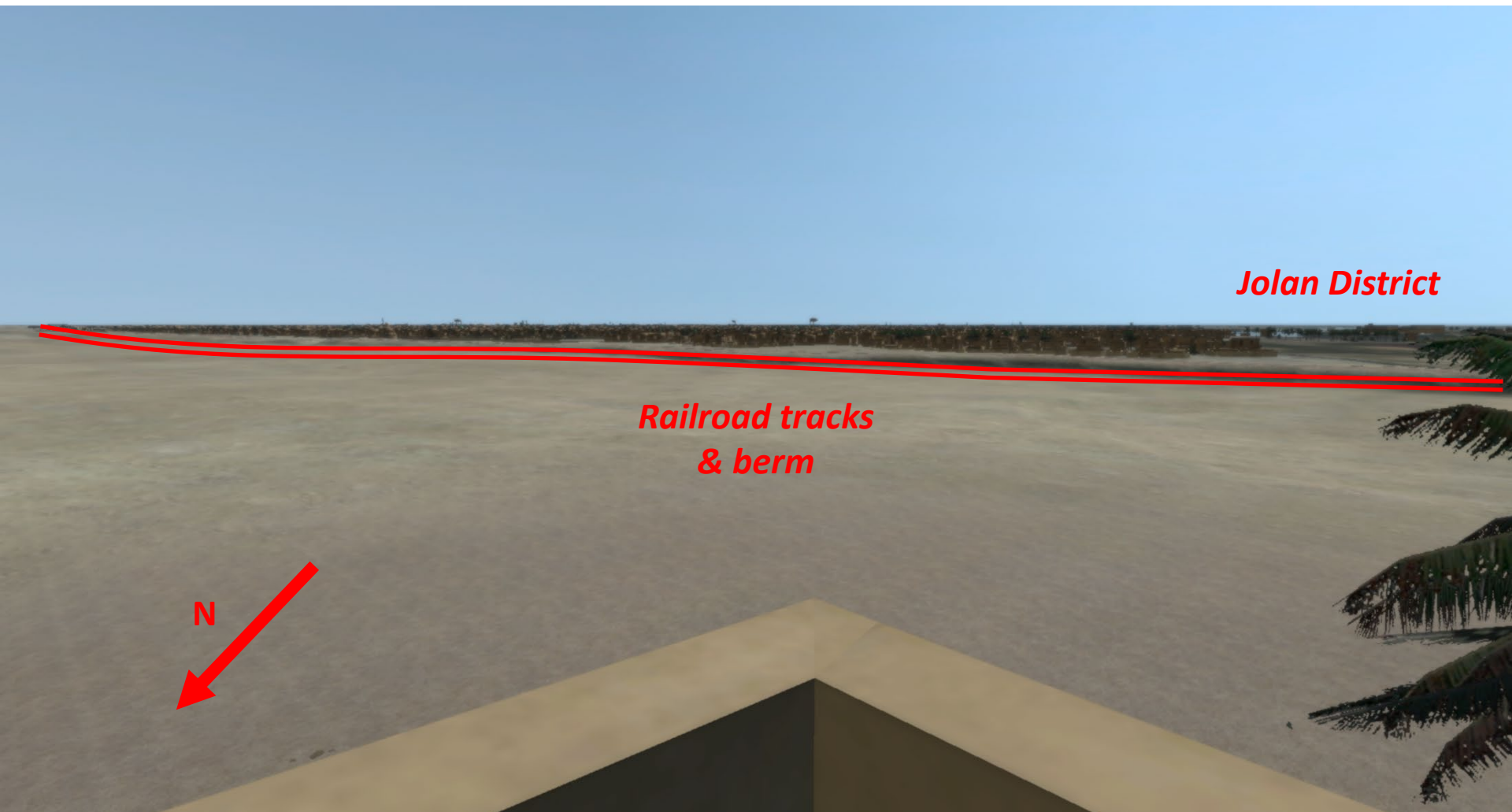
match this view – then go strait (west) and match next view





match this view – then land on top of the building  
with the red dot and pivot to match next view





match this view – then return to master view

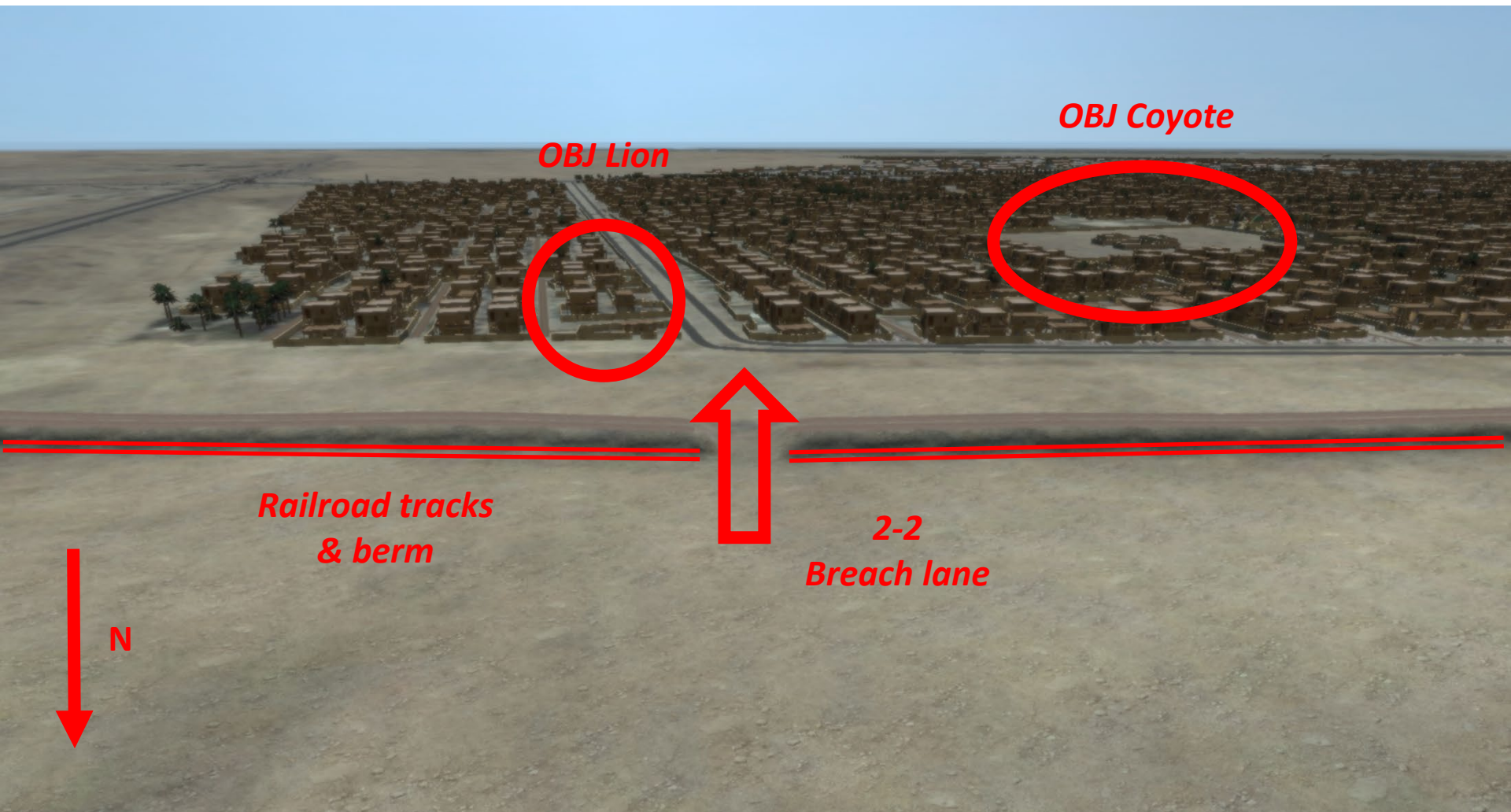


# Master View of Fallujah

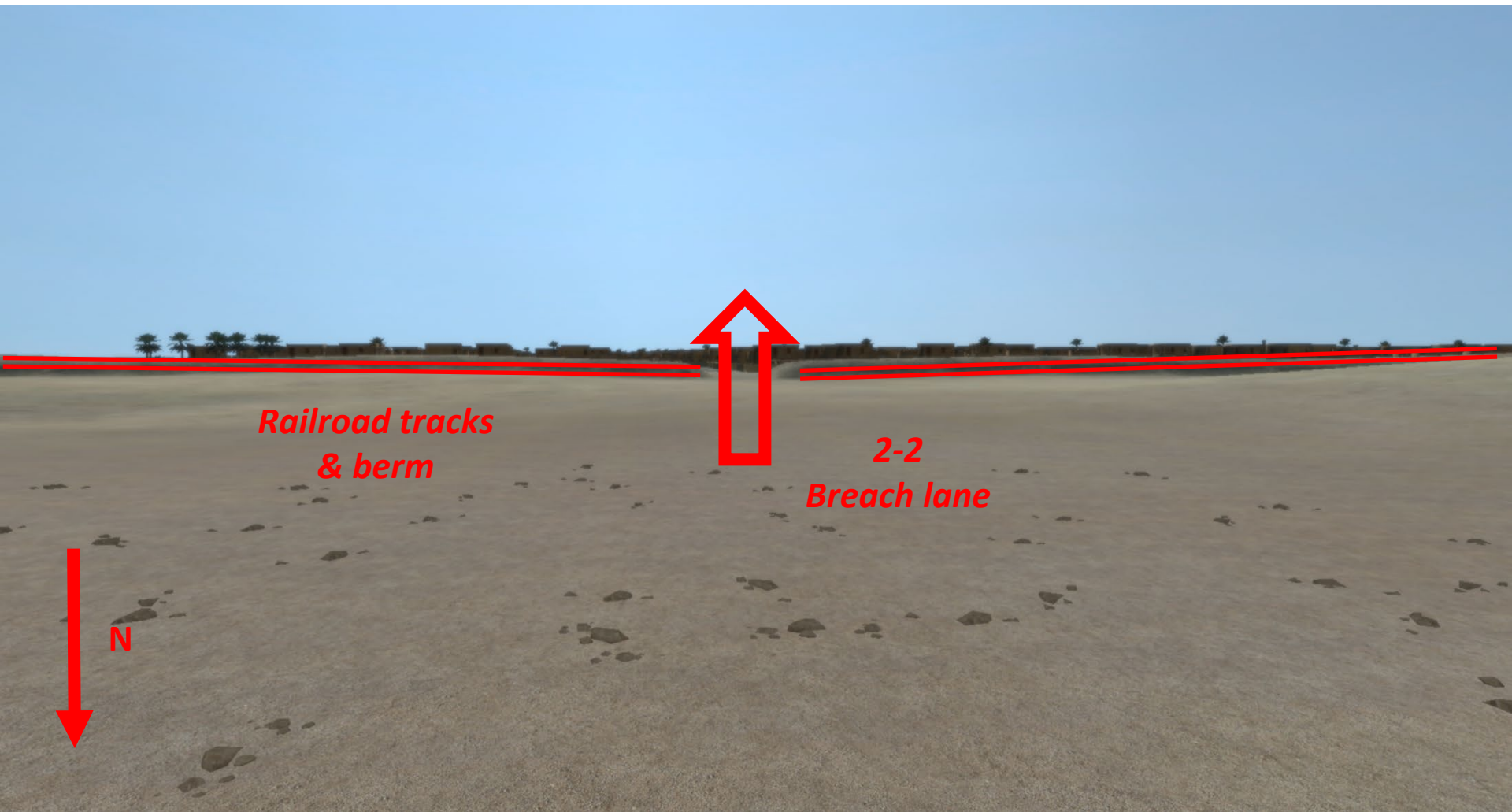


match this view – then move to the red dot and pivot to match next view





match this view – then drop strait down to ground level



match this view – then ‘drive’ strait through the breach lane to match the next view





*OBJ Lion*

N

match this view – stay at ground level and turning right,  
'drive' along the road to match the next view



match this view – stay at ground level and turning left, ‘drive’ to match the next view



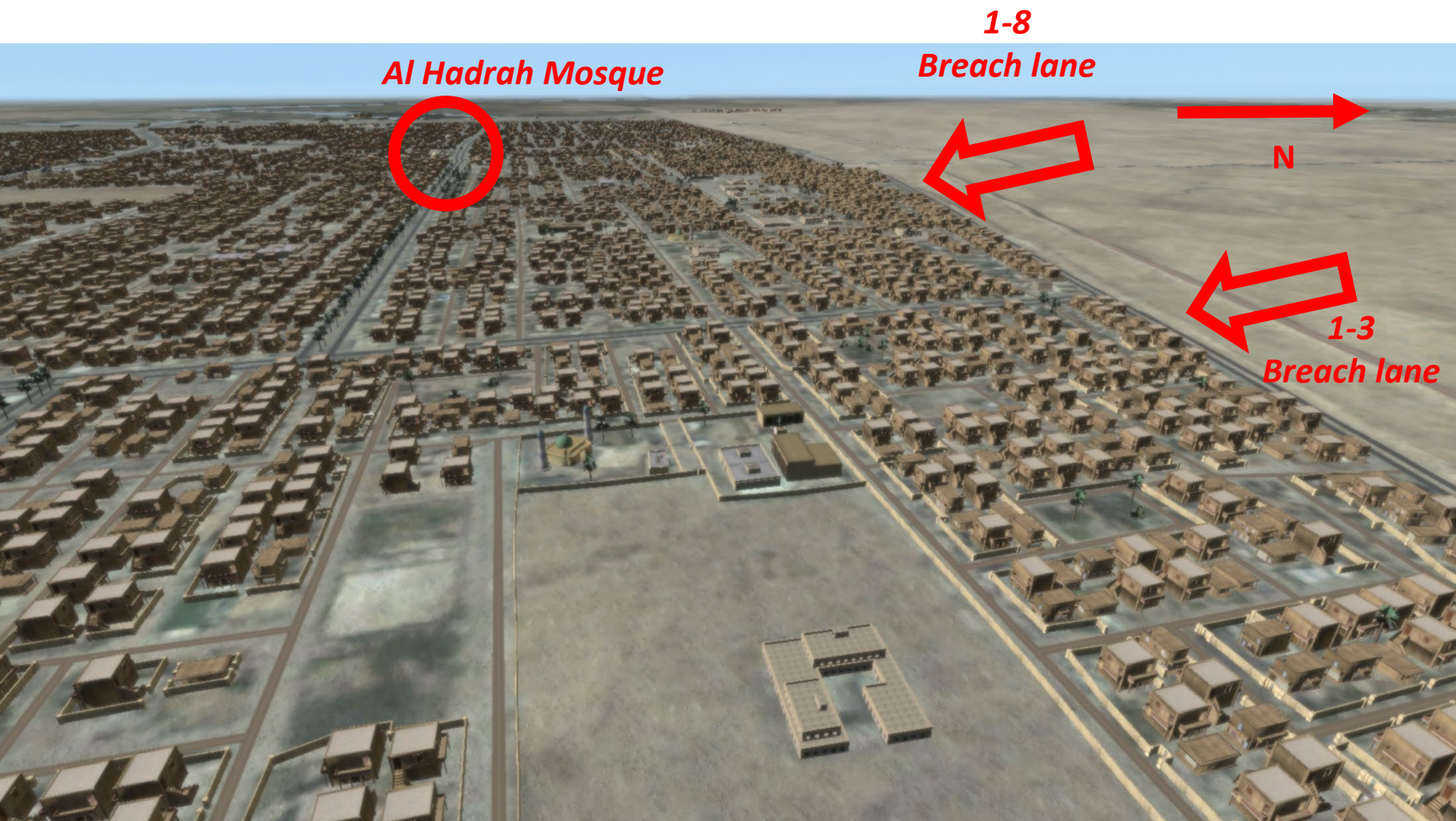


match this view – stay at ground level and turning right,  
'drive' in to OBJ Coyote matching the next view



match this view – lift strait up in the air pivot to look northwest





match this view – fly to Al Hadrah Mosque, land on the minaret and  
match the next view





match this view – from here fly to the red dot on the next slide

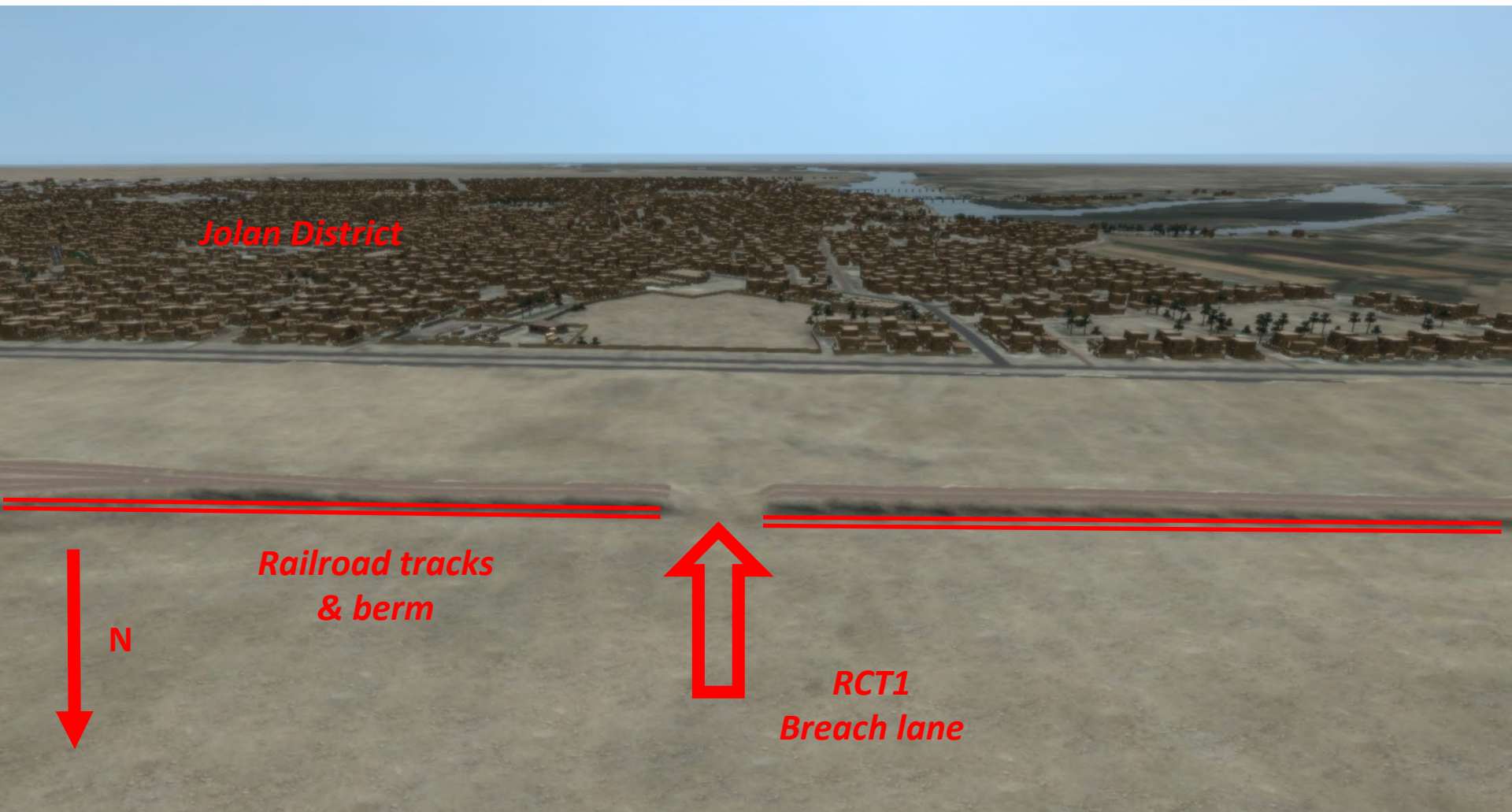


# Master View of Fallujah



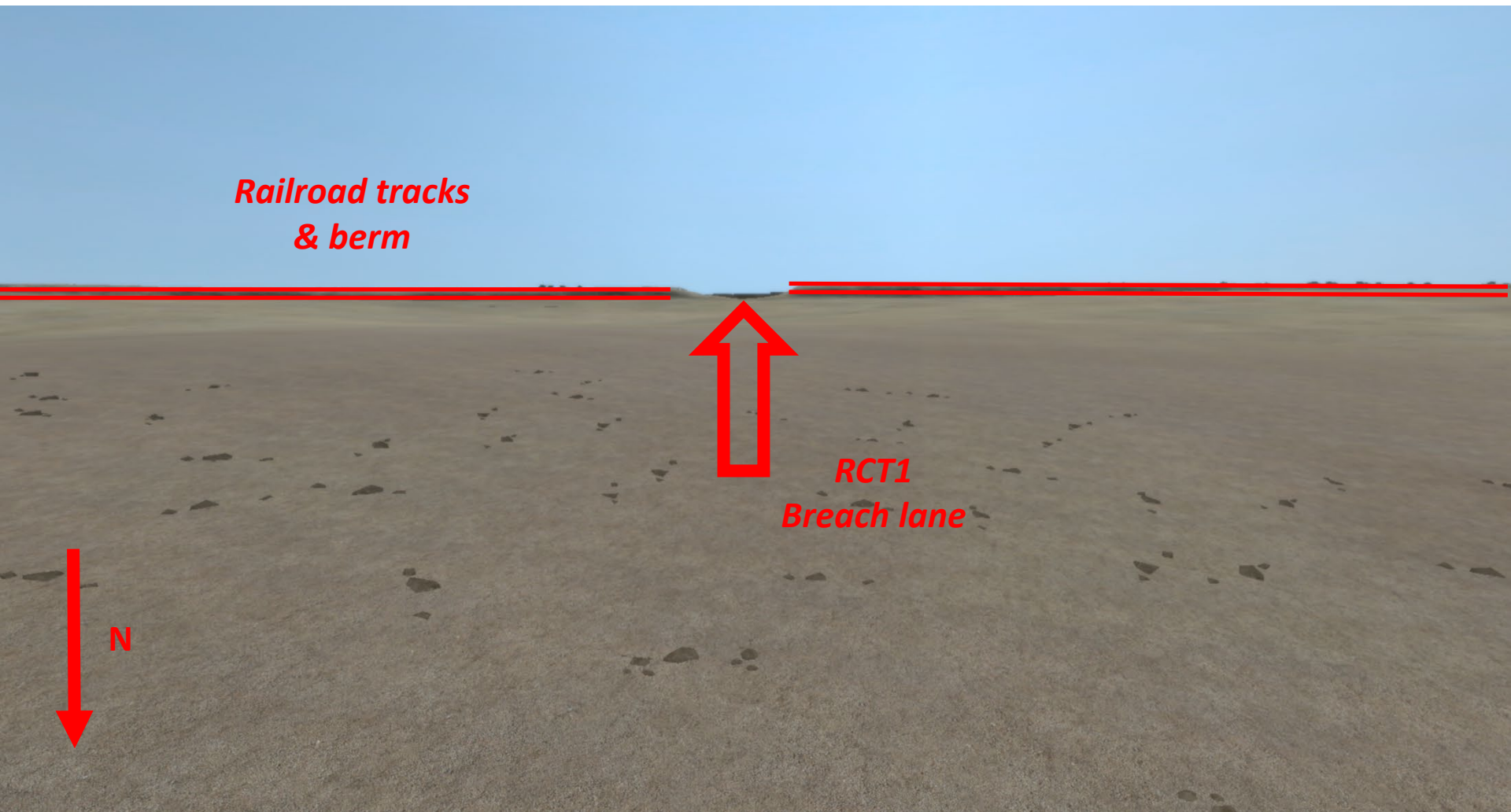
from here match the view on the next slide



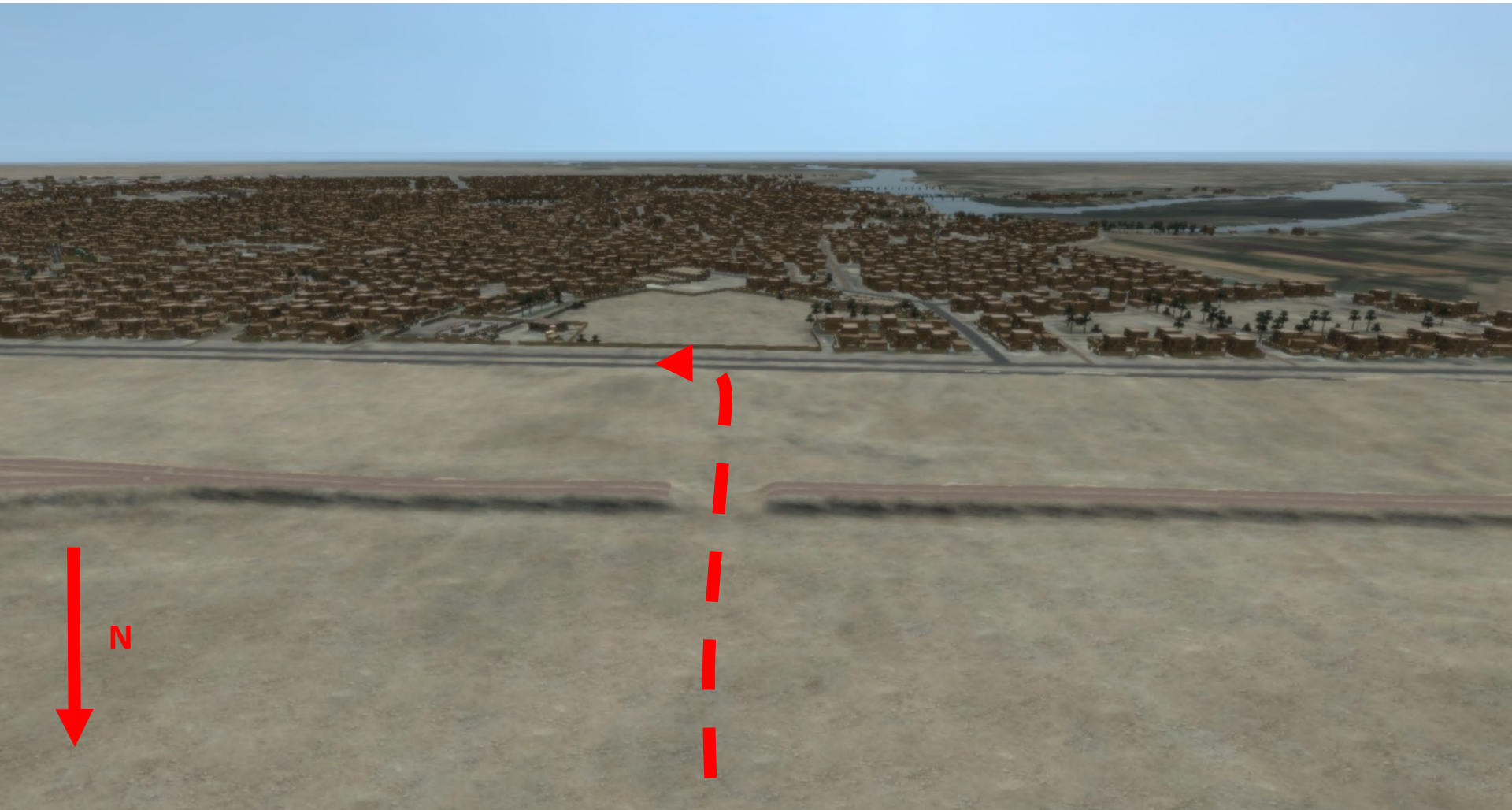


match this view – Drop down to ground level





match this view – then ‘drive’ at ground level  
through the breach lane as indicated on next slide



match the view on the next slide





match this view – then ‘drive’ strait ahead (east) to the next view



match this view – then ‘drive’ at ground level turning right to follow the arrow.  
Drive down the road to the rock in the next view





match this view – then ‘drive’ at ground level turning right to follow the arrow.  
Drive down the road to the next view



match this view – then ‘drive’ at ground level bearing left to follow the arrow  
in to the Jolan park and match the next view



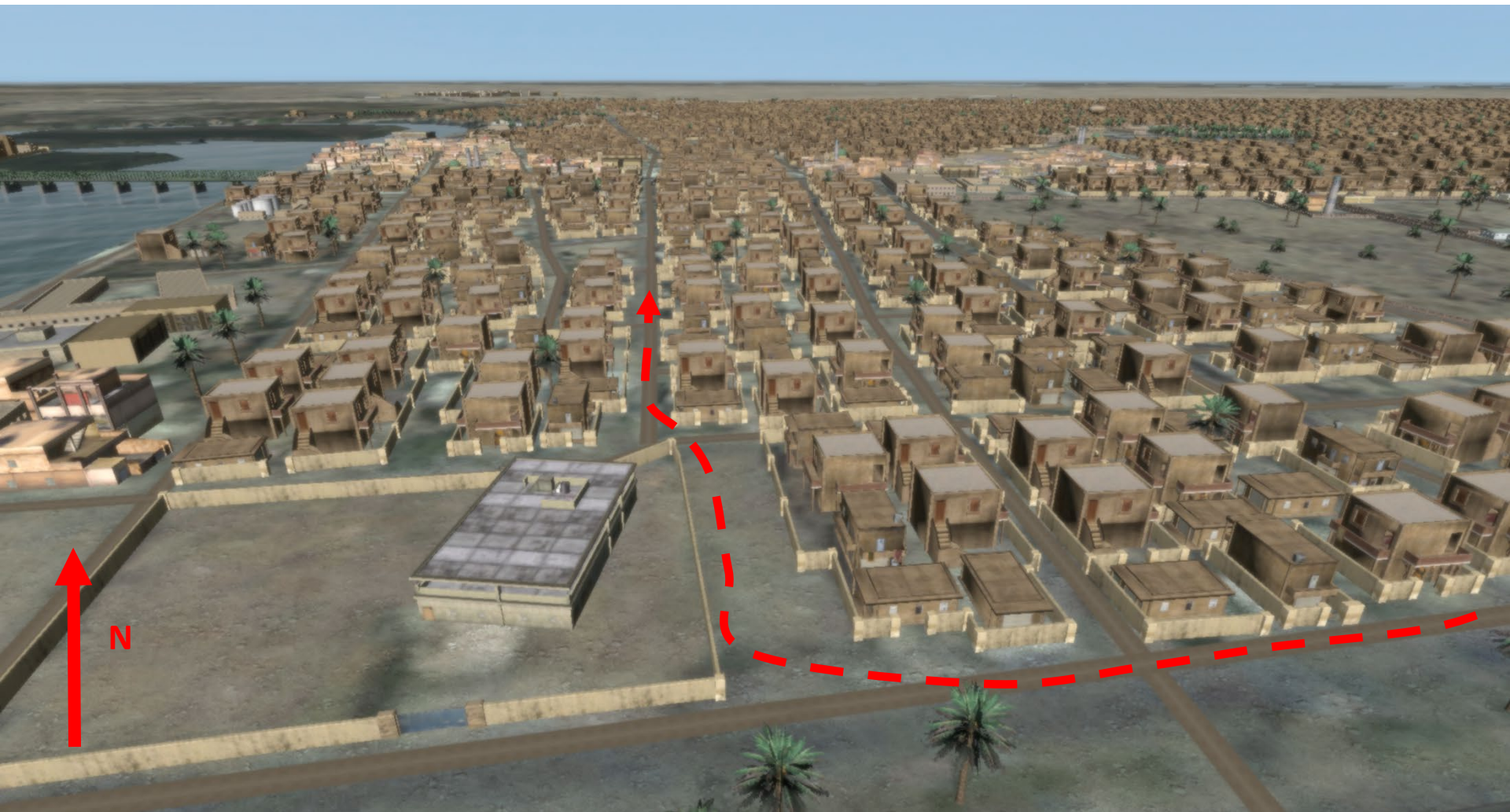


match this view – then left up in the air to match the next view



match this view – will use to point out OBJ Virginia,  
then drop to ground level and ‘drive’ along the dashed line (PL Fran)





Following along PL Fran to this location, the 'drive' at ground level through the alleyways to vic. the point of the arrow. Then lift up to discuss the linkup.



# Master View of Fallujah



Lift up in the air over the red dot and pivot to match the view of the next slide 33





Match this view – the slide right (west) to match the next view





Match this view, then return to Master View



# Master View of Fallujah

